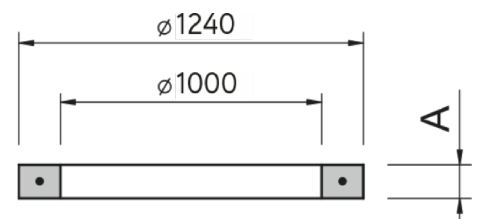
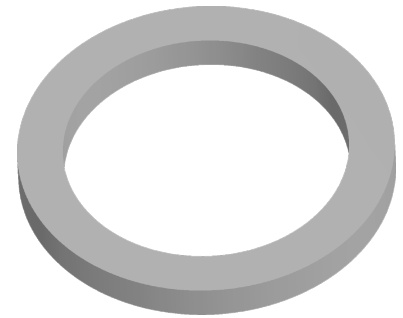


## Concrete leveling ring without lock

For fitting DN1000 covers.

Code	<b>BAR10-08</b>
Material	<b>Concrete</b>
Weight	<b>80 kg</b>
Norm	<b>DIN1917</b>
Package	<b>13 ks/pal</b>

Smooth concrete ring, 1000/1240mm, height 80 mm



HEIGHT  
ADJUSTMENT

