

Square water-gastight manhole cover in a cast iron frame with a foot

E600 - areas exposed to high loads from heavy machinery

Standard



Code	KQ66ELV05CS
Material	Cast iron
Weight	104 kg
Norm	EN124-2
Package	10 ks/pal
Load class	Heavy traffic load

watertight square cover, without hinge, KASI PUR dampening insert, without spring-secured lid in frame, watertight to 2 bar

COVER:

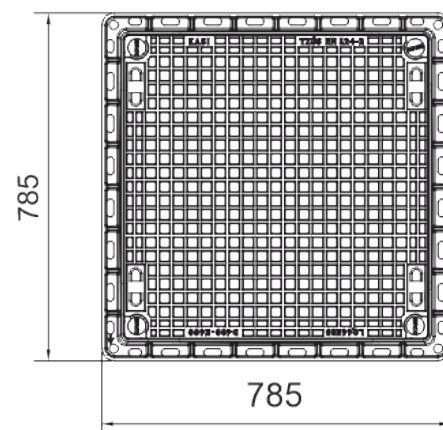
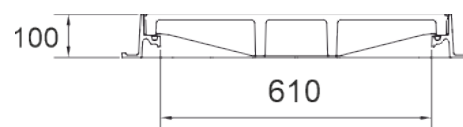
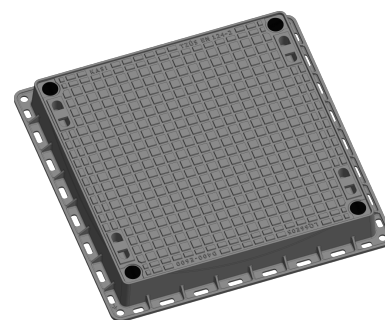
- Lid weight 75kg
- Secured screws against opening
- Cast iron without venting with a quiet design.
- For water-gastight sets
- Custom theme/logo option

FRAME:

- Cast iron frame with foot h.100mm
- Integrated PUR damping insert with high resistance

OTHER:

- The cover is supplied with a black finish
- Water-gastight cover with certified resistance to 2 bar



CUSTOMER
SOLUTIONS



WATER-GASTIGHT
2BAR.