

Square water-gastight manhole cover in a distribution frame

E600 - areas exposed to high loads from heavy machinery

Standard



Code	KQ66EIV05CS
Material	Cast iron
Weight	244 kg
Norm	EN124-2
Package	6 ks/pal
Load class	Heavy traffic load

watertight square cover, without hinge, KASI PUR dampening insert, without spring-secured lid in frame, watertight to 2 bar

COVER:

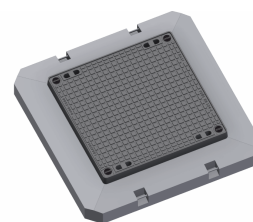
- | Lid weight 75kg
- | Secured screws against opening
- | Cast iron without venting with a quiet design.
- | For water-gastight sets
- | Custom theme/logo option

FRAME:

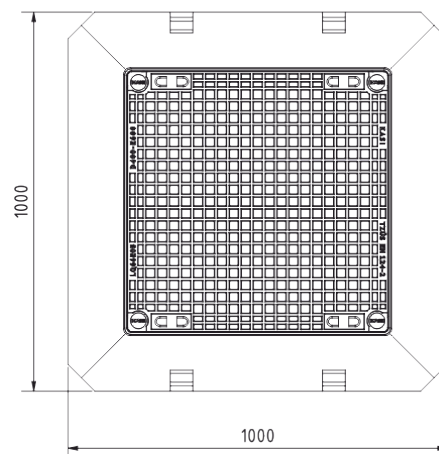
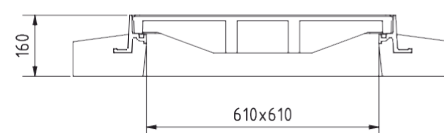
- | Integrated PUR damping insert with high resistance
- | Concrete-cast iron distribution frame

OTHER:

- | The cover is supplied with a black finish
- | Water-gastight cover with certified resistance to 2 bar



A-A (1 : 10)



CUSTOMER
SOLUTIONS



WATER-GASTIGHT
2BAR.