

E600 - areas exposed to high loads from heavy machinery

Standard

Code	KEIV15CS
Material	Concrete, Cast iron
Weight	210 kg
Norm	EN124-2
Package	5 ks/pal
Load class	Heavy traffic load

without hinge, PUR shock-absorbing lining - tunnel version, without spring-loaded lid locking in frame, watertight to 2 bar

COVER:

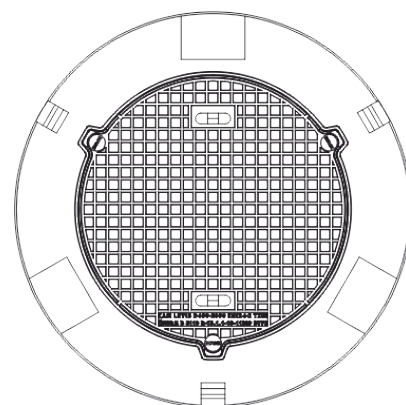
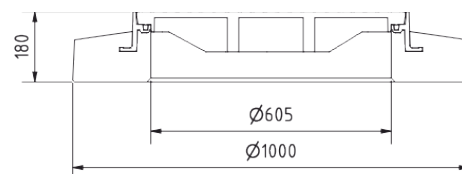
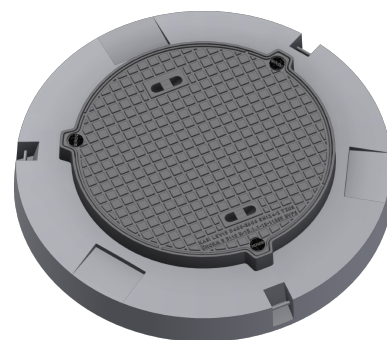
- | For water-gastight sets
- | Fitted with screws - stainless steel
- | Lid weight 49kg

FRAME:

- | Distribution frame 1000mm without mounting for trap
- | Frame height 160 mm
- | Suitable for replacing covers in places with slightly damaged cones.
- | Three handling hinges
- | Integrated PUR damping insert with high resistance

OTHER:

- | The cover is supplied with a black finish
- | Suitable for places with high traffic load
- | Water-gastight cover with certified resistance to 2 bar



**WATER- AND GAS-
TIGHT**



QUIET DESIGN

